

ShieldDrive

Dual-Stage, Oil-Sealed Rotary Vane Vacuum Pump

ShieldDrive is a dual-stage, oil-sealed rotary vane vacuum pump with a Permanent Magnet motor optimized for efficiency and leak-free operation. It employs static sealing with a mechanical shield and magnetic coupling designs, offering complete protection against oil migration. Ideal for laboratory use, its robust design guarantees leak-free performance in critical applications.

▶ **Leak Free Operation**

Magnetic shield design enhances connection between motor and pump to ensure leak-free operation.

▶ **Corrosion-Resistant**

Designed with a proprietary coating to perform in corrosive applications.

▶ **Gas Ballast**

Adjustable gas ballast allows for the different requirements of condensable gas to be exhausted.

▶ **Oil**

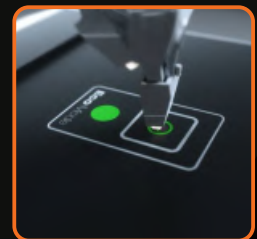
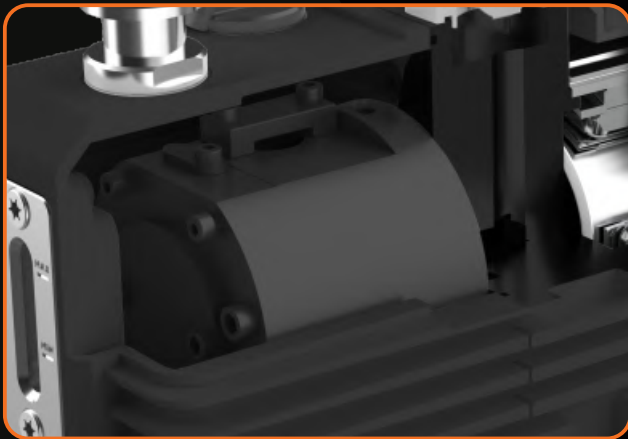
Proprietary mineral oil included with the pump. All models can also be prepped with high performance PFPE.

▶ **Anti-Suck Back Design**

Protects vacuum system from backstreaming oil contamination in the event of an unexpected shut down.

▶ **Eco Mode**

The pump is equipped with variable-frequency motor, and the Eco Mode allows the pump to run at peak efficiency, optimizing both energy consumption and noise.



SD12

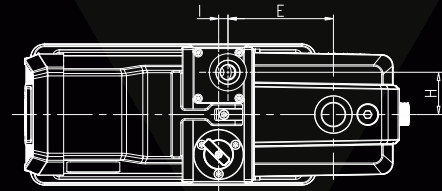
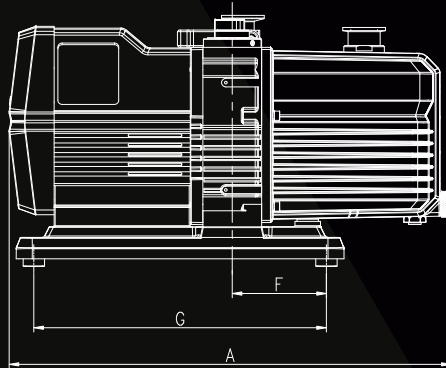
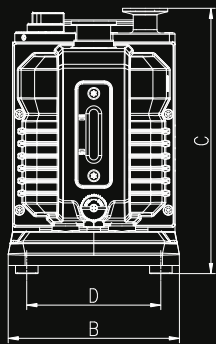
SD2

ShieldDrive

▼ Dual-Stage, Oil-Sealed Rotary Vane Vacuum Pump

SPEC		SD2	SD8	SD12
Pumping Speed (60Hz)	m ³ /h (CFM)	2.5 (1.5)	8 (4.7)	10 (5.9)
Ultimate Total Pressure without Gas Ballast	mbar (Torr)	5x10 ⁻³ (3.7x10 ⁻³)	5x10 ⁻³ (3.7x10 ⁻³)	5x10 ⁻³ (3.7x10 ⁻³)
Ultimate Total Pressure with Gas Ballast	mbar (Torr)	3x10 ⁻² (2.2x10 ⁻²)	3x10 ⁻² (2.2x10 ⁻²)	3x10 ⁻² (2.2x10 ⁻²)
Power Supply		Single Phase	Single Phase	Single Phase
Power Rating	kW	250W	370W	370W
Motor Speed		1800	1500	1850
Inlet/Outlet	rpm	KF16	KF25	KF25
Oil Capacity	L	0.33	1	1
Noise Level	dB	≤50	≤52	≤53
Weight	lbs	22	33	33
Dimensions (L*W*H)	in	12.2x4.5x6.6	16.3x6x9.3	16.3x6x9.3

Dimensions



Unit: inch

Model	A	B	C	D	E	F	G	H	I	Inlet	Outlet
SD2	12.2	4.5	6.6	3.6	3.7	2.9	7.5	0.95	/	KF16	KF16
SD8	16.3	6	9.3	4.7	4.5	3.4	10.7	1.8	0.4	KF25	KF25
SD12	16.3	6	9.3	4.7	4.5	3.4	10.7	1.8	0.4	KF25	KF25